



US 20040155574A1

(19) **United States**

(12) **Patent Application Publication**
Lai et al.

(10) **Pub. No.: US 2004/0155574 A1**

(43) **Pub. Date: Aug. 12, 2004**

(54) [ORGANIC LIGHT EMITTING DISPLAY]

(30) **Foreign Application Priority Data**

Feb. 11, 2003 (TW)..... 92102731

(76) Inventors: **Wei-Chih Lai**, Kaohsiung (TW);
Chun-Huai Li, Pingtung Hsien (TW)

Publication Classification

(51) **Int. Cl.⁷** **H05B 33/00**

(52) **U.S. Cl.** **313/504**

Correspondence Address:

**JIANQ CHYUN INTELLECTUAL PROPERTY
OFFICE**

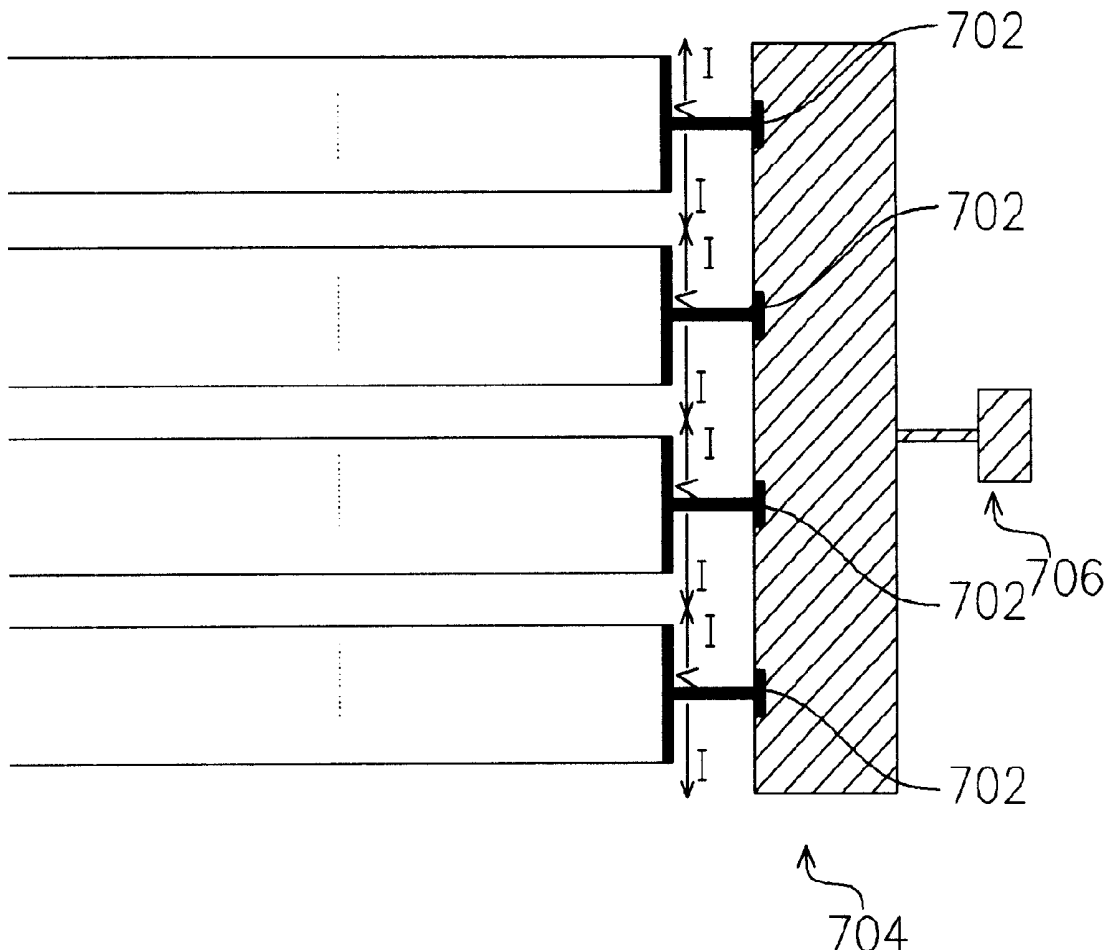
**7 FLOOR-1, NO. 100
ROOSEVELT ROAD, SECTION 2
TAIPEI 100 (TW)**

(57) **ABSTRACT**

An organic light-emitting display is provided. The organic light-emitting display has a power line divided into multiple sets with a voltage terminal attached to the center of each power line set. Furthermore, all the voltage terminals are coupled to a power supply through a low resistance conductive material medium. With this setup, brightness imbalance between neighboring pixels is minimized.

(21) Appl. No.: **10/707,163**

(22) Filed: **Nov. 25, 2003**



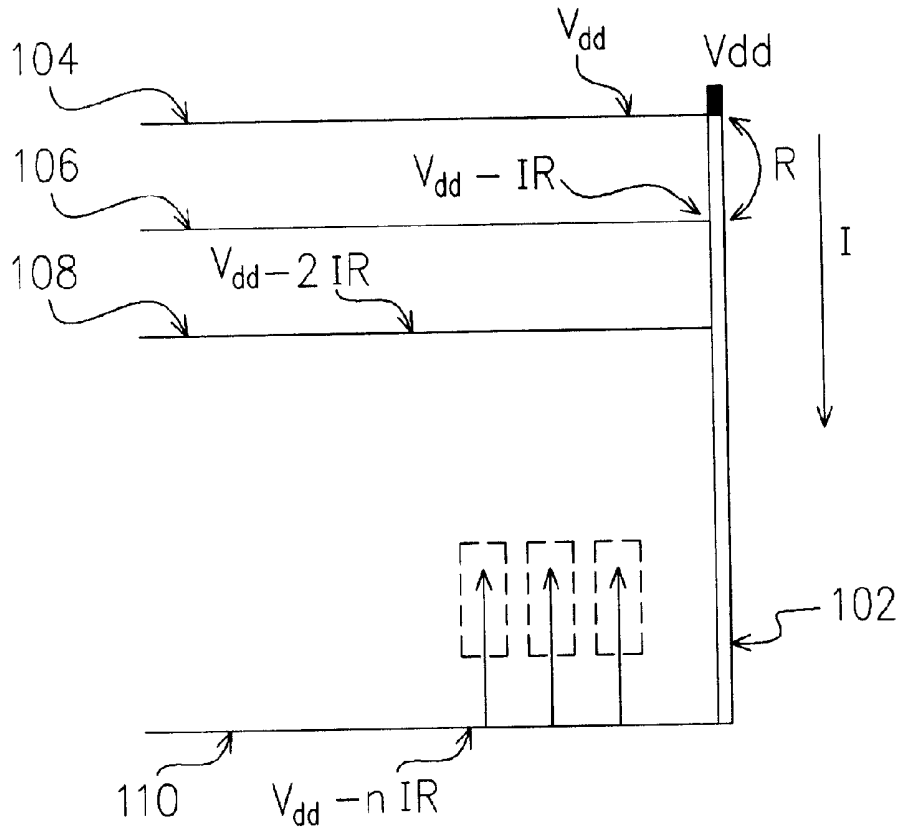


FIG. 1 (PRIOR ART)

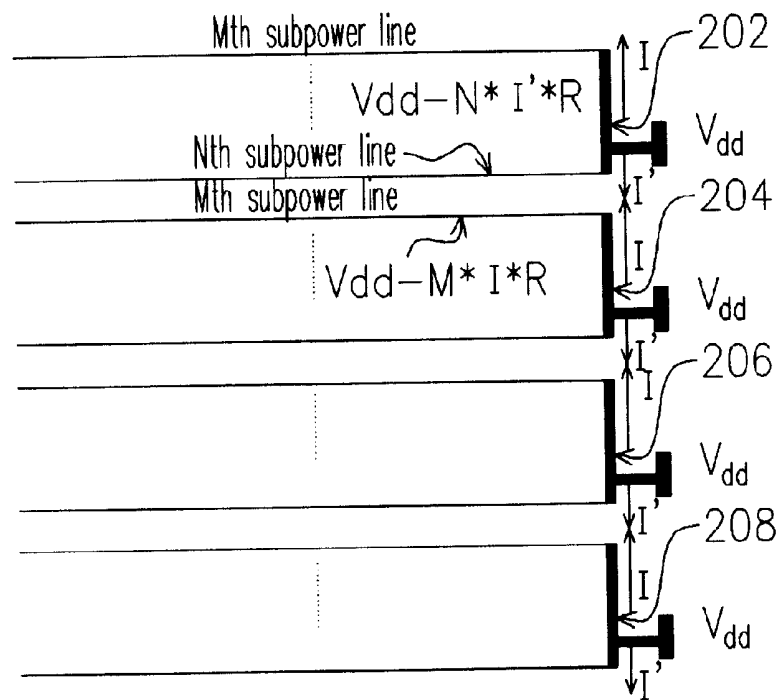


FIG. 2 (PRIOR ART)

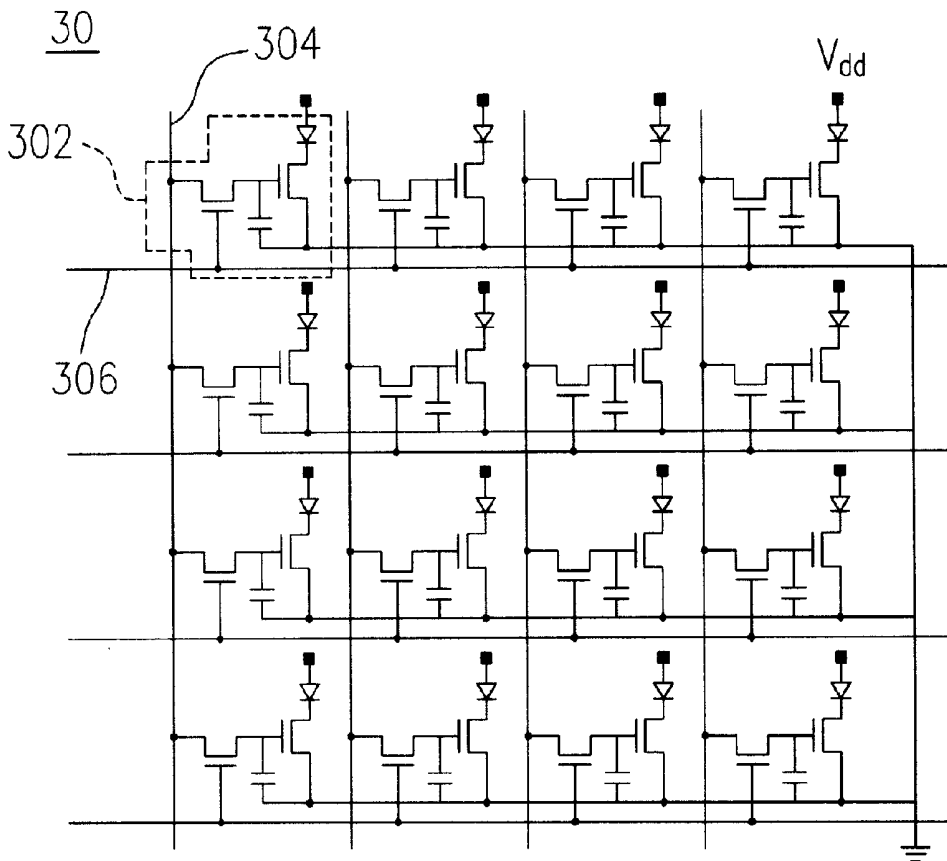


FIG. 3

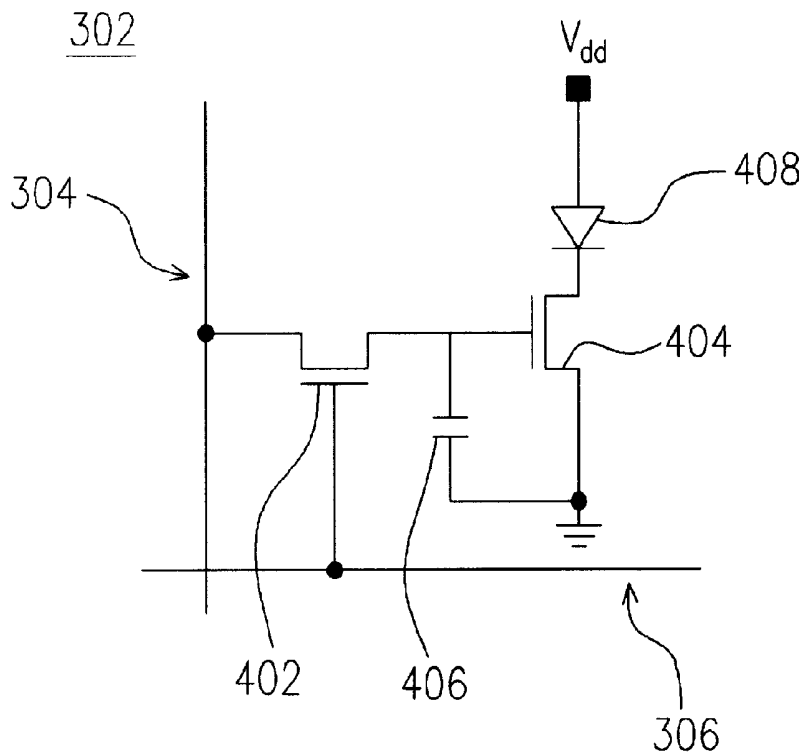


FIG. 4

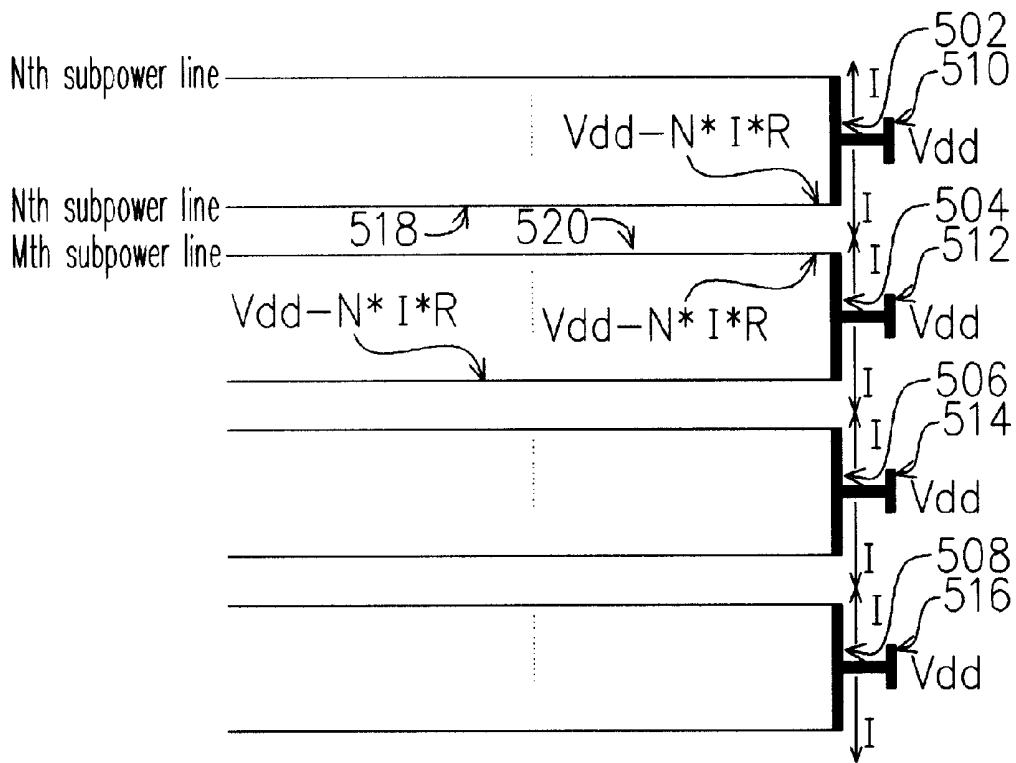


FIG. 5

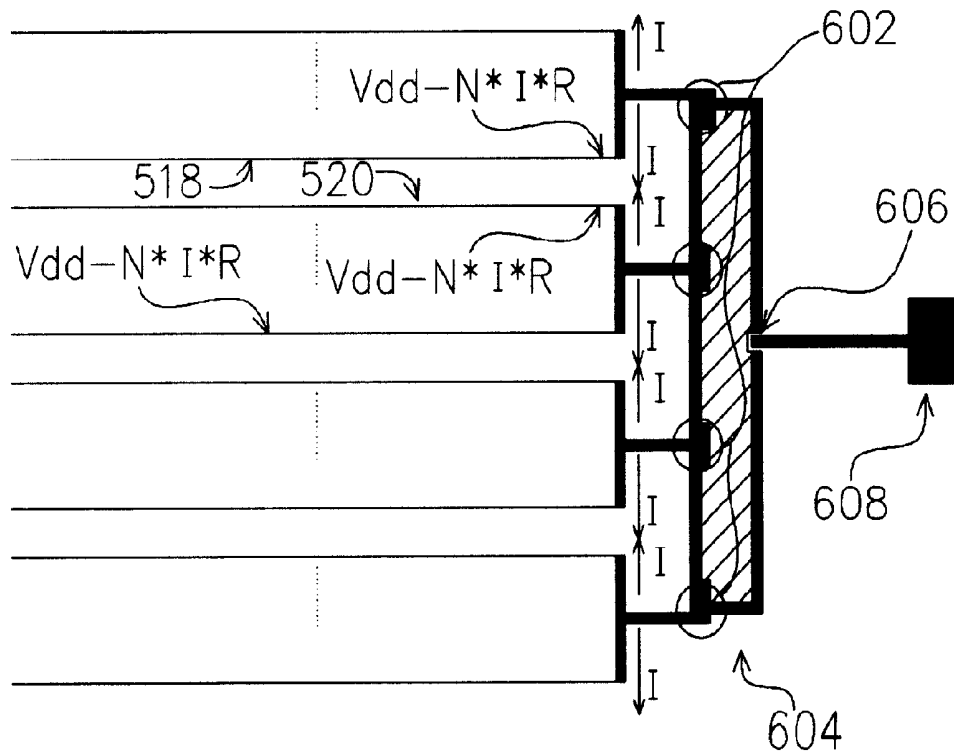


FIG. 6

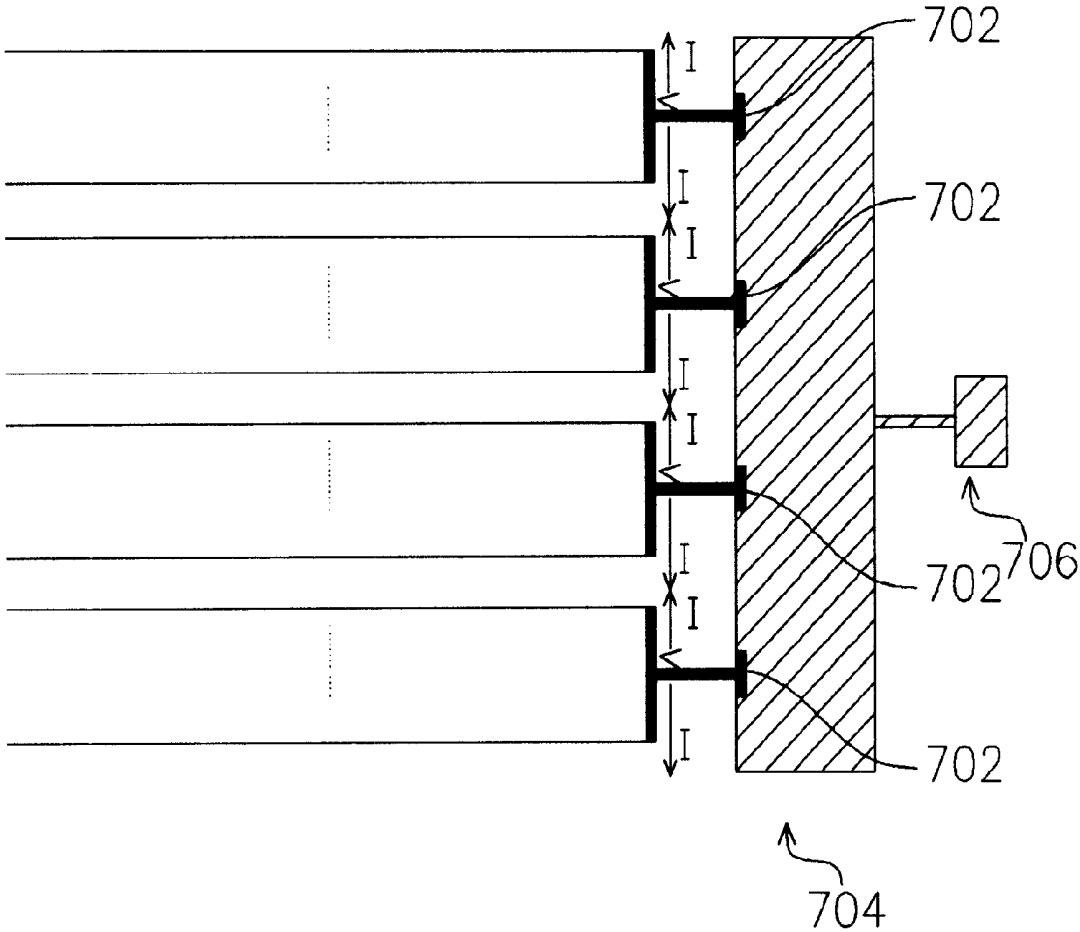


FIG. 7

[ORGANIC LIGHT EMITTING DISPLAY]**CROSS REFERENCE TO RELATED APPLICATIONS**

[0001] This application claims the priority benefit of Taiwan application serial no. 92102731, filed Feb. 11, 2003.

BACKGROUND OF INVENTION

[0002] 1. Field of Invention

[0003] The present invention relates to an organic light-emitting display (OLED). More particularly, the present invention relates to an organic light-emitting display having a power line divided into multiple sets such that a voltage terminal is coupled to the center of each power line set and that the voltage terminals from various sets are all coupled to a power supply through a medium fabricated using a low resistant material.

[0004] 2. Description of Related Art

[0005] One of the earliest recordings of dynamic images can be found in documentary movies. Later on, when the cathode ray tube (CRT) was invented, television is brought into each family. With the advent of the computer age, CRT is adopted as a display monitor for the desktop computer. Despite its popularity, the radiation gun design always poses some hazard to human health and increases the bulk of each unit. Thus, less bulky and less hazardous alternatives to the CRT are sought after.

[0006] Flat panel displays are the results of intensive research to reduce size and weight of each display. Many types of displays belong to this category. They include liquid crystal display (LCD), field emission display (FED), organic light-emitting display (OLED) and plasma display panel (PDP). Organic light-emitting display is a type of self-illuminating display also commonly referred to as organic electroluminescence display (OELD). Major characteristics of an OLED are: dc low voltage driven, high luminance, high efficiency, high contrast value and light. In addition, an OLED is capable of producing a spectrum of color including the three primary colors red (R), green (G), blue (B) as well as white. Hence, OLED has the greatest potential to become the dominant type in the next generation of flat panel displays. Aside from being thin, light, energy-saving, self-illuminating and having a high resolution, a device fabricated using the OLED technique also has a wide viewing angle, a brilliant color contrast and a relatively low cost of production. With these advantages, it has been broadly applied as a LCD or backlight in an indicator panel, a mobile phone, a digital camera and a personal digital assistant (PDA).

[0007] According to the driving method, OLED can be classified into passive matrix driven type and active matrix driven type. A passive matrix driven OLED has a rather simple structure and does not require any thin film transistor (TFT) to drive the circuit and hence has a lower production cost. However, the passive matrix OLED has only moderate resolution and poor displaying capacity. Furthermore, as size of the display panel is increased, energy consumption is increased and working life is shortened. On the other hand, active matrix OLED technique—can be applied to form a large display screen with a wider viewing angle, a higher

luminance level and a quicker response. The only drawback is that it has a higher production cost than a passive matrix OLED.

[0008] According to the driving method, flat panel displays can be divided into voltage driving and current driving types. The voltage driving type is normally applied to the TFT-LCD. Different voltages are applied to the data lines to attain different gray levels so that a full panel of colors is produced. Voltage driven TFT-LCD is technically mature, operationally stable and non-expensive to implement. The current driving type is normally applied to an OLED. Different currents, instead of voltages, are applied to the data lines to attain different gray levels so that a full panel of color is produced.

[0009] In an active OLED, a large current will flow in power lines around the pixel array. In general, these power lines are fabricated from thin sheets of metal so that its resistance is usually large and hence may lead to a rather large voltage drop after the passage of a current across a short distance along the power line. However, the actual voltage applied to a pixel will affect the size of a current passing into the OLED and ultimately the luminance level of the pixel. Consequently, voltage differential across a power line often leads to a non-uniformity of pixel brightness level.

[0010] FIG. 1 is the simulated voltage drop along a power line in a conventional organic light-emitting display. As shown in FIG. 1, a power line 102 is coupled to a voltage terminal having a voltage V_{dd} . Assume a current I flows along the power line 102 due to the voltage V_{dd} and the power line 102 is dissected into several sections with each section of the power line having a resistance R . As the current I flows along the power line 102, the voltage at a first secondary power line 104 is V_{dd} , the voltage at a second secondary power line 106 is $V_{dd}-IR$, the voltage at a third secondary power line 108 is $V_{dd}-2IR$ and so on. In general, the n th (where n is a positive integer) secondary power line 110 will receive a voltage $V_{dd}-nIR$. When the voltage drop in the secondary power line is large, the voltage across the organic light-emitting diode in each pixel between the positive and the negative terminal will drop correspondingly. In other words, there is a great reduction in the current passing through the organic light-emitting diode leading to a considerable drop in the overall brightness level. Consequently, there will be considerable difference in luminance between the light-emitting diodes powered by the first secondary power line and the last secondary power line.

[0011] In addition, a plurality of voltage terminals can be used in the display panel to shorten the distance between the connected power lines and reduce the number of secondary power lines (that is, reduce the sum of current flowing through the power line). With this set up, voltage drop across each secondary power line will be reduced. FIG. 2 is the simulated voltage drop along another power line design in a conventional organic light-emitting display. In FIG. 2, the power lines are divided into four sets, a first power line set 202, a second power line set 204, a third power line set 206 and a fourth power line set 208. Each power line set is coupled to M (M is a positive integer) secondary power lines and N (N is a positive integer) secondary power lines. The terminal for each power line set is closer to the N th secondary line (that is, farther away from the M th secondary line). Assume the current flowing through each secondary

power line in the group of M secondary power lines is I1 and the current flowing through each secondary power line in the group of N secondary power lines is I2. The voltage at the Mth secondary voltage will be $V_{dd} - (M \cdot I1 \cdot R)$ and the voltage at the Nth secondary voltage will be $V_{dd} - (N \cdot I2 \cdot R)$. Using the first power line set 202 and the second power line set 204 as an example, the voltage between the Nth secondary power line in the first set 202 and the Mth secondary power line in the second set 204 is considerable. Thus, with this setup, considerable non-uniformity in brightness level still exists between neighboring pixels in the panel.

SUMMARY OF INVENTION

[0012] Accordingly, one object of the present invention is to provide an organic light-emitting display (OLED), in which a power line is divided into isolated sets of power lines, voltage terminals are coupled to the center of each power line set and further commonly connect to a power supply through a low-resistance material. With this design, variation in the brightness level between neighboring pixels due to a voltage drop within each group of power lines is greatly reduced.

[0013] To achieve these and other advantages and in accordance with the purpose of the invention, as embodied and broadly described herein, the invention provides an organic light-emitting display. The organic light-emitting display (OLED) comprises a plurality of power line sets and a plurality of voltage terminals. Each power line set is isolated from one another. Moreover, each power line set is coupled to a plurality of secondary power lines. Each voltage terminal is coupled to the center of each power line set. Furthermore, each voltage terminal is coupled to a power supply that provides a voltage. A voltage applied to each power line set will generate an electric current that diverts through the secondary power lines for supplying the electric current needed to drive a plurality of pixels in the organic light-emitting display.

[0014] In the embodiment of this invention, the pixels are included in an array of organic light-emitting devices. Each pixel comprises a switching transistor, a driving transistor, a storage capacitor and a light-emitting device. The switching transistor has a first drain, a first gate and a first source. The first drain is coupled to a data line and the first gate is coupled to a scan line. The driving transistor has a second drain, a second gate and a second source. The second gate is coupled to the first source and the second source is connected to a ground. The storage capacitor has a first terminal and a second terminal. The first terminal is coupled to the first source and the second gate. The second terminal is connected to the ground and the second source. The light-emitting device has an anode and a cathode. The anode is coupled to one of the secondary power lines and the cathode is coupled to the second drain. The switching transistor and the driving transistor are thin film transistors and the light-emitting device is an organic light-emitting diode or a polymer light-emitting diode.

[0015] This invention also provides an alternative organic light-emitting display. The organic light-emitting display (OLED) comprises a plurality of power line sets and a plurality of voltage terminals. Each power line set is isolated from one another. Moreover, each power line set is coupled to a plurality of secondary power lines. Each voltage terminal

is coupled to each power line set. Furthermore, each voltage terminal is coupled through a conductive material to a power supply. A voltage applied to each power line set will generate an electric current that diverts through the secondary power lines for supplying the electric current needed to drive a plurality of pixels in the organic light-emitting display.

[0016] It is to be understood that both the foregoing general description and the following detailed description are exemplary, and are intended to provide further explanation of the invention as claimed.

BRIEF DESCRIPTION OF DRAWINGS

[0017] The accompanying drawings are included to provide a further understanding of the invention, and are incorporated in and constitute a part of this specification. The drawings illustrate embodiments of the invention and, together with the description, serve to explain the principles of the invention.

[0018] FIG. 1 is a schematic view illustrating a voltage drop along a power line in a conventional organic light-emitting display.

[0019] FIG. 2 is a schematic view illustrating a voltage drop along another power line design in a conventional organic light-emitting display.

[0020] FIG. 3 is a schematic layout of a pixel array implemented in an organic light-emitting display according to an embodiment of this invention.

[0021] FIG. 4 is a circuit diagram of a pixel structure in an organic light-emitting display according to an embodiment of this invention.

[0022] FIG. 5 is a schematic diagram illustrating a voltage drop along a power line in an organic light-emitting display according to one embodiment of this invention.

[0023] FIG. 6 is a diagram showing a conventional connection between the voltage terminals of an OLED and a power supply.

[0024] FIG. 7 is a diagram showing a connection between the voltage terminals of an OLED and a power supply according to one embodiment of this invention.

DETAILED DESCRIPTION

[0025] Reference will now be made in detail to the present preferred embodiments of the invention, examples of which are illustrated in the accompanying drawings. Wherever possible, the same reference numbers are used in the drawings and the description to refer to the same or like parts.

[0026] The organic light-emitting display (OLED) in this invention is of an active matrix type. FIG. 3 is a schematic layout of pixel array in an organic light-emitting display according to an embodiment of this invention. The pixel array 30 comprises of a plurality of pixels 302, a plurality of data lines 304 and a plurality of scan lines 306.

[0027] FIG. 4 is a circuit diagram of a pixel structure implemented in an embodiment of the invention. The pixel 402 comprises a switching transistor 402, a driving transistor 404, a storage capacitor 406 and a light-emitting device 408. The switching transistor 402 has a drain terminal, a gate

terminal and a source terminal. Similarly, the driving transistor **404** has a drain terminal, a gate terminal and a source terminal. The storage capacitor **406** has a first terminal and a second terminal. The light-emitting device **408** has an anode and a cathode. The drain terminal of the switching transistor **402** is coupled to the data line **304**, and the gate terminal of the switching transistor **402** is coupled to the scan line **306**. The source terminal of the switching transistor **402** is coupled to the gate terminal of the driving transistor **404**, and the first terminal of the storage capacitor **406**. The drain terminal of the driving transistor **404** is coupled to the cathode of the light-emitting device **406**. The source terminal of the driving transistor **404** is grounded and connects to the second terminal of the storage capacitor **406**. The anode of the light-emitting device **408** is coupled to a secondary power line. The secondary power line is coupled through a power line to a power voltage V_{dd} . The switching transistor **402** and the driving transistor **404** can be, for example, thin film transistors. The light-emitting device **408** can be, for example, an organic light-emitting diode or a polymer light-emitting diode. If there is a voltage drop across the secondary power line, the amount of electric current supplied to the light-emitting device **408** will be affected, which adversely causes a slight variation in the brightness level of the pixel **302**.

[0028] FIG. 5 is a schematic view showing a voltage drop along a power line in an organic light-emitting display according to one embodiment of this invention. The OLED comprises a plurality of power line sets and a plurality of voltage terminals. For the sake of simplified illustration, only four sets of power lines and four voltage terminals are illustrated. As shown in FIG. 5, the four sets of power lines, including a first power line set **502**, a second power line set **504**, a third power line set **506** and a fourth power line set **508**, are isolated from one another. Each set of power line is coupled to $2N$ (where N is a positive number) secondary power lines. The electric current derived from the application of a power voltage V_{dd} to each set of power lines diverts into each secondary power line, and flow into the pixels linked up with a particular secondary power line. The voltage terminal **510** is coupled to the center of the first power line set **502**, the voltage terminal **512** is coupled to the center of the second power line set **504**, the voltage terminal **514** is coupled to the center of the third power line set **506**, and the voltage terminal **516** is coupled to the center of the fourth power line set **508**. Each voltage terminal (**510**, **512**, **514**, **516**) is also connected to a power supply that provides a power voltage V_{dd} . If an electric current I passes through each of the N secondary power line, the voltage at the N th secondary power line is $V_{dd} - (N \cdot I \cdot R)$. Using the first power line set **502** and the second power line set **504** as examples, the respective voltages at the last secondary power line **518** of the first set **502** and the first secondary power line **520** of the second set **504** are both $V_{dd} - (N \cdot I \cdot R)$. Therefore, the difference in brightness between neighboring pixels in the display panel is greatly minimized.

[0029] FIG. 6 is a schematic diagram showing a conventional connection structure between the voltage terminals of an OLED and a power supply. Voltage terminals **602** are connected to a metallic wire **604** provided on the OLED panel. The metallic wire **604** is connected through a common contact terminal **606** to a power supply **608**. Since the metallic wire **604** has a relatively high ohmic resistance, the supply of a large electric current is usually required, which

results in considerable power waste and further creates a steep voltage drop. To reduce the ohmic resistance of the metallic wire **604**, the width of the metallic wire **604** can be increased. However, widening the metallic wire **604** leaves a smaller area in the display panel for forming other useful devices.

[0030] To overcome the above deficiencies, each of the voltage terminals is in contact with a common low-resistance conductive interface. FIG. 7 is a schematic diagram showing a connection structure between the voltage terminals of an OLED and a power supply according to one embodiment of this invention. A conductive interface **704** of low-resistance material is placed in connection between voltage terminals **706** and a power supply **706**. Voltage drop between the power supply **706** and the voltage terminals **702** is thereby reduced to a small amount, resulting in less power waste. Being externally connected, the conductive material interface **704** does not occupy any panel area.

[0031] In summary, the power line region is grouped into power line sets in this invention, and each voltage terminal is coupled to the center of each power line set. In addition, all the voltage terminals are coupled to a power supply unit through a low resistant conductive medium. Thus, non-uniform brightness between pixels due to a voltage drop across each power line set is minimized.

[0032] It will be apparent to those skilled in the art that various modifications and variations can be made to the structure of the present invention without departing from the scope or spirit of the invention. In view of the foregoing, it is intended that the present invention cover modifications and variations of this invention provided they fall within the scope of the following claims and their equivalents.

1. An organic light-emitting display (OLED), comprising:
 - a plurality of power line sets isolated from each other, wherein each power line set is coupled to a plurality of secondary power lines; and
 - a plurality of voltage terminals, wherein each voltage terminal is coupled to a center of a power line set, and the voltage terminals are coupled to a power supply, wherein an electric current resulting from a voltage applied to each power line set passes through the secondary power lines into a plurality of corresponding pixels in the organic light-emitting display.
2. The OLED of claim 1, wherein the pixels are arranged in a pixel array.
3. The OLED of claim 1, wherein each pixel comprises:
 - a switching transistor having a first drain terminal, a first gate terminal and a first source terminal, wherein the first drain terminal is coupled to a data line and the first gate terminal is coupled to a scan line;
 - a driving transistor having a second drain terminal, a second gate terminal and a second source terminal, wherein the second gate terminal is coupled to the first source terminal and the second source terminal is connected to ground;
 - a storage capacitor having a first terminal and a second terminal, wherein the first terminal is coupled to the first source terminal and the second gate terminal and the second terminal is connected to ground and the second source terminal; and

- a light-emitting device having an anode and a cathode, wherein the anode is coupled to one of the secondary power lines and the cathode is coupled the second drain terminal.
4. The OLED of claim 3, wherein the switching transistor and the driving transistor comprise thin film transistors.
5. The OLED of claim 3, wherein the light-emitting device comprises an organic light-emitting diode.
6. The OLED of claim 3, wherein the light-emitting device comprises a polymer light-emitting diode.
7. An organic light-emitting display (OLED), comprising:
- a plurality of power line sets isolated from one another, wherein each power line set is coupled to a plurality of secondary power lines; and
 - a plurality of voltage terminals, wherein each voltage terminal is coupled to a power line set, and the voltage terminals are coupled through a conductive material medium to a power supply;
- wherein an electric current resulting from a voltage applied to each power line passes through the secondary power lines into a plurality of corresponding pixels in the organic light-emitting display.
8. The OLED of claim 7, wherein the pixels are arranged in a pixel array.
9. The OLED of claim 7, wherein each pixel furthermore comprises:
- a switching transistor having a first drain terminal, a first gate terminal and a first source terminal, wherein the first drain terminal is coupled to a data line and the first gate terminal is coupled to a scan line;
 - a driving transistor having a second drain terminal, a second gate terminal and a second source terminal, wherein the second gate terminal is coupled to the first source terminal and the second source terminal is connected to ground;
 - a storage capacitor having a first terminal and a second terminal, wherein the first terminal is coupled to the first source terminal and the second gate terminal and the second terminal is connected to ground and the second source terminal; and
 - a light-emitting device having an anode and a cathode, wherein the anode is coupled to one of the secondary power lines and the cathode is coupled the second drain terminal.
10. The OLED of claim 9, wherein the switching transistor and the driving transistor comprise thin film transistors.
11. The OLED of claim 9, wherein the light-emitting device comprises an organic light-emitting diode.
12. The OLED of claim 9, wherein the light-emitting device comprises a polymer light-emitting diode.

* * * * *

专利名称(译)	[有机发光显示器]		
公开(公告)号	US20040155574A1	公开(公告)日	2004-08-12
申请号	US10/707163	申请日	2003-11-25
[标]申请(专利权)人(译)	赖伟智 李春怀		
申请(专利权)人(译)	赖伟志 李春怀		
当前申请(专利权)人(译)	赖伟志 李春怀		
[标]发明人	LAI WEI CHIH LI CHUN HUAI		
发明人	LAI, WEI-CHIH LI, CHUN-HUAI		
IPC分类号	H05B33/06 G09F9/30 G09G3/32 G09G3/34 H01L27/32 H01L51/50 H05B33/00 H05B33/14 H05B33/26		
CPC分类号	G09G3/3225 H01L27/3276 G09G2300/0842		
优先权	092102731 2003-02-11 TW		
其他公开文献	US7164229		
外部链接	Espacenet USPTO		

摘要(译)

提供有机发光显示器。有机发光显示器具有分成多组的电源线，电压端子连接到每个电源线组的中心。此外，所有电压端子通过低电阻导电材料介质耦合到电源。通过这种设置，相邻像素之间的亮度不平衡被最小化。

